

# Jaguar

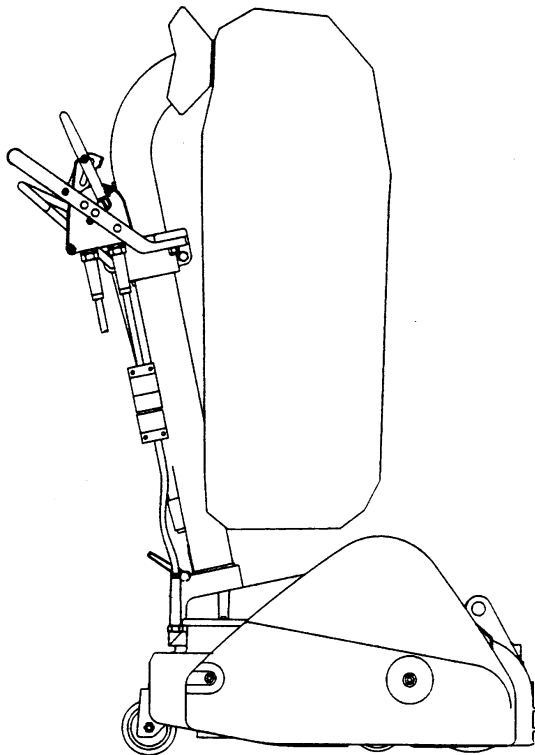
---

## USE AND MAINTENANCE MANUAL FOR THE JAGUAR MACHINE

This manual contains important information for safe use and operation of this machine.

Failure to read this manual before starting up, adjusting or carrying out maintenance operations on this machine may cause damage to persons and/or things. The operator must be trained to use the machine before starting it up. Keep this manual for future reference. For new manuals, apply to:

---



**INDEX**

Storing.....	3
Carrying and handling of the machine .....	4
one person.....	4
two people.....	4
Starting:.....	7
Instruction for assembling after transportation.....	7
Instructions for electrical connection.....	7
wires, extensions, plugs.....	8
instruction for removal of sawdust caused by working.....	8
Instructions for operator safety:.....	9
individual protective measures.....	9
respect of protective measures and warning .....	9
instruction for correct usage of machines.....	11
Machine characteristics.....	12
Indications concerning the machine:.....	13
non-allowed usage.....	13
Description for starting the machines.....	13
Compliance declaration.....	14
Adjustment procedure:.....	15
sanding pressure.....	15
wall edge wheel.....	16
wheels.....	16
Procedures for the setting of the abrasive .....	16
Routine maintenance.....	17
sanding chamber ( <i>for user</i> ) .....	17
roller ( <i>for user</i> ) .....	17
wheels ( <i>for user</i> ).....	17
dust bag ( <i>for user</i> ).....	17
belts ( <i>for user</i> ).....	17
bearings ( <i>for assistance only</i> ).....	17
Spare parts.....	17
Emergency situation:	
Problems/Causes/Remedies ( <i>for user</i> ) .....	18

<b>DANGER:</b>	means	The operator or other people may be seriously injured or die if the <b>DANGER</b> warnings found on this machine or in this manual are ignored or not kept to. Read and comply with all <b>DANGER</b> warnings found on this machine or in this manual.
<b>WARNING:</b>	means	The operator or other people may be injured if the <b>WARNING</b> found on this machine or in this manual are ignored or not kept to. Read and comply with all <b>WARNING</b> found on this machine or in this manual.
<b>CAUTION:</b>	means	The operator or other people may be hurt if <b>CAUTION</b> warnings found on this machine or in this manual are ignored or not kept to. Read and comply with all <b>CAUTION</b> warnings found on this machine or in this manual

**DANGER**

Failure to read the **JAGUAR** machine manual before starting up, adjusting or carrying out maintenance operations on the machine itself may cause injury to people and/or damage to things. The operator must be trained to use the machine before starting it up.

**STORING UP**

We advice you to store up the machine without removing it from the original packing. This way you can make a column of two packings maximum one above the other.

If the machine is removed from the original packing and is not used for some time it is necessary to avoid that wheels and drum remains in strict contact with the floor. Make use of two stands 50 mm high at least to lay the machine on being careful that contact takes place on the floor directly.

Store up the machine in a dry place, if you don't, damages might occur to the machine.

Storage temperature from – 20 °C to 50 °C.

## CARRYING THE MACHINE

**WARNING:** Since the machine is heavy, ask for help in lifting it.

### MOVEMENT WITH ONE PERSON

In order to make movement easier, the machine can be dismantled into two parts:

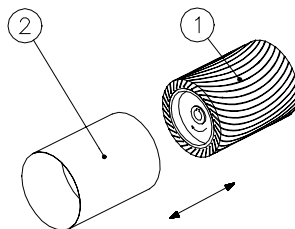
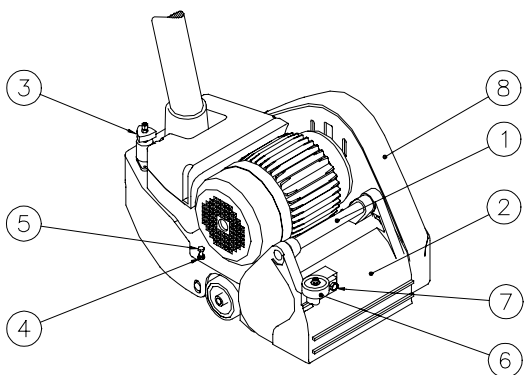
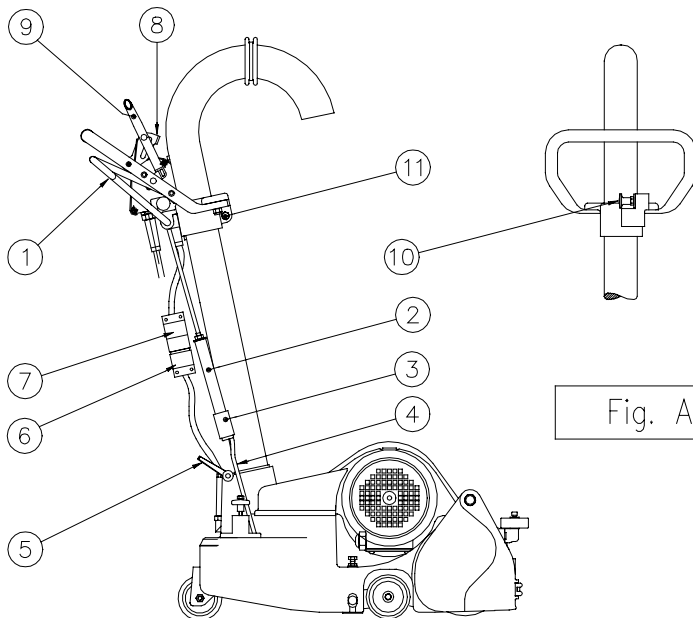
- suction tube and complete handgrip
  - base with roller and motor
- proceed as follows:

1. Make sure that the power supply cable is disconnected from the mains and the machine.
2. After having pushed forward lever **pos. 1 fig. A** lift the tube **pos. 3** and release bar **pos. 4** from the small roll **pos. 2**
3. Pull the plug **pos. 6** out of the socket **pos. 7** by rotating the plug anticlockwise
4. Loosen the handle **pos. 5 fig. A**, slip the tube off and take it to the work site
5. Lift up the base seizing in the front part the pin protecting the belt **pos. 1 fig. B** and in the inferior part the basement itself.

### MOVEMENT WITH TWO PEOPLE

In order to move the machine with two people, proceed as follows:

1. One operator takes hold of the handle hand-grip.
2. The second person lifts the machine using the pin of the belt guard **pos. 1 fig. B**



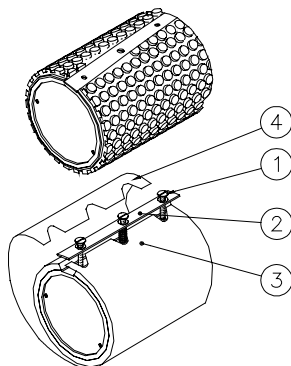


Fig. D

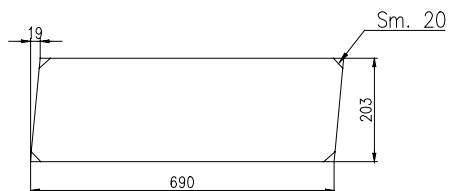


Fig. E

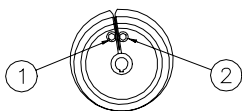


Fig. F

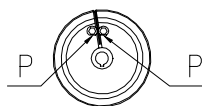


Fig. G

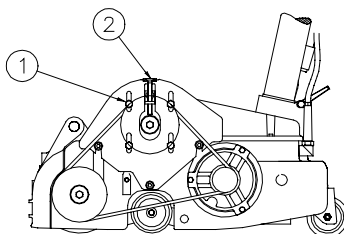


Fig. H

## SETTING THE MACHINE UP

### INSTRUCTIONS FOR ASSEMBLING AFTER TRANSPORTATION

In order to start up the machine, proceed as follows:

1. Fit the tube in place and tighten the handle **pos. 5 fig. A**
2. Put the bar **pos. 4** in the small roll **pos. 3** and lower the tube **pos. 3 fig. A**
3. Insert plug **pos. 6** into the socket **pos. 7** by rotating the plug clockwise
4. Lift the roller by means of lever **pos. 1 fig. A**

**DANGER:** Using the machine before it is completely assembled may cause injuries to people and/or damages to things. Do not use a machine which is not completely assembled. Keep all fastenings closed. Adjust the machine according to specifications.

### INSTRUCTIONS FOR ELECTRICAL CONNECTION

**CAUTION:** This machine only works with the voltage and frequency shown on the machine plate. Before connecting the cable to the power supply grid, make sure that the voltage and frequency available are correct.

**DANGER:** Exposing the machine to water or rain leads to a risk of electrocution. Keep the machine in a dry building.

**DANGER:** Incorrect mains connection of the machine leads to a risk of electrocution. In order to prevent possible electric shocks, always use a three-wire electric system connected to an electrical earth. For maximum protection against electric shocks, use a circuit protected by a differential earth fault interrupter.

**DANGER:** Tampering with the earth pin in any way may lead to electrocution. Do not cut, remove or break the earth pin. Do not try to insert a three-pin plug into a socket or connector which does not have three holes. If the plug does not fit the socket, consult an authorized electrician.

**DANGER:** Using the machine with a damaged plug or power supply cable may lead to electrocution. If cables or plugs are worn out or damaged in any way, have them replaced by an electrician or authorized service staff.

## CABLES, EXTENSIONS AND PLUGS

Only use approved three-wire cables, two of which are current-carrying and one earth.

The maximum recommended length of the cable is 10 m; for lengths exceeding 10 m use cables with larger cross-section.

**DANGER** If the machine is used with cables of insufficient cross-section and/or excessive length, damage to people and/or things may occur.

## MACHINE WITH SINGLE-PHASE MOTOR 230/240V~ 50Hz

For Europe, the power supply cable must be of HAR approved type, namely **HO5VV-3x2.5 mm<sup>2</sup>**, and the plug must be of the **2P+T16A-250V** approved type.

**For non-European versions, consult an authorized JANSER distributor.**

## INSTRUCTIONS FOR REMOVAL OF SAWDUST ORIGINATED BY WORKING

**DANGER:** Dust created by sanding may spontaneously ignite and cause injury or damage. Dust from sanding must be dealt with suitably. Always empty the sanding dust into metal containers located outside the building.

**DANGER:** Dust created by sanding may spontaneously ignite and cause injuries or damages. Empty the dust bag when it is one-third full. Empty the dust bag each time after finishing with the machine. Never leave the dust bag unattended when it contains sanding dust.  
Do not empty the contents of the bag over a fire.



## ADVICES ON PREVENTIVE MEASURES FOR USERS

### INDIVIDUALS PROTECTIVE MEASURES

- WARNING:** Clouds of sanding dust may form and be breathed in while the sanding machine is being used. Always wear a dust mask when using the machine for sanding.
- WARNING:** The eyes and/or body may be injured if protective clothing or devices are not worn. Always wear safety glasses, protective clothing and a dust mask during any sanding operation.
- WARNING:** During sanding operations, loud noises may occur which may damage hearing after long exposure. Always use acoustic protection during any sanding operation.

### RESPECT OF PROTECTIONS AND DANGER SIGNALS

- DANGER:** Use of the machine before it is completely assembled may cause injuries to people and/or damage to things. Do not use a machine which is not completely assembled. Keep all fastenings closed. Adjust the machine according to specifications.
- DANGER:** Injuries or damages may be caused by using the sander without its guards and covers in place. Always make sure that all guards and covers are in their places and well attached.
- DANGER:** Sanding wooden floors may lead to an explosive environment. Cigarettes, cigars, pipes, lighters, pilot lights and all other sources of fire may cause explosion if they are used while sanding. Sources of fire must be completely removed from the work area.
- DANGER:** Poorly ventilated work areas may lead to an explosive environment when certain combustible materials are present in the air, such as, for example, solvents, thinners, alcohol, fuels, some paints, sawdust and other combustible materials. Machines for sanding floors can cause combustible materials and vapours to ignite.  
Read the instructions of the manufacturer of each chemical product used in order to find out its combustibility. Keep working area well ventilated.
- DANGER:** Knocking against nails while sanding may cause explosion or start a fire. Always sink all nails completely before sanding the surfaces.

- DANGER:** If the power supply circuit trips continuously or it provides insufficient power, there is a risk of electrocution. Have an authorized electrician check the fuses, protection circuit and power supply line.
- DANGER:** Maintenance or repairs carried out on a machine which is not duly disconnected from the power supply line may cause electrocution. Disconnect the power line before carrying out any maintenance work and/or repairs.
- DANGER:** Use of this machine connected to a grid without earth may cause electrocution. Never disconnect or disable the power supply earth conductor. Consult an electrician if the earth conductor is missing or if you suspect that the system is not suitably earthed.
- DANGER:** Use of this machine with a damaged power supply cable may cause electric shock. Do not use the machine if the power supply cable is damaged. Do not use the power supply cable for moving the machine.
- DANGER:** Injury or electrocution may occur if the machine passes over the power supply cable or damages it. Keep the cable away from the lower part of the machine in order to avoid contact with the abrasive. Keep the power supply cable up over the machine.
- DANGER:** The moving parts of this machine may cause serious injury and/or damage. Keep hands, feet and loose clothing away from the moving parts of the sander.
- DANGER:** Carrying out maintenance operations, replacing or adjusting belts, or replacing the dust bag may cause injury to the operator and/or surrounding people if the machine is connected to the power supply.
- WARNING:** Serious injuries or damages may occur if all instructions on this machine or in this manual are not read and complied with. Read and abide by all safety instructions. Make sure that all the plates, transfer printings, warnings, cautions and instructions are fixed to the machine. New plates may be obtained by your authorized JANSER retailer.
- CAUTION:** Injuries or damages may occur if maintenance and repairs are carried out by unauthorized staff.
- CAUTION:** Damages may occur if the machine is not stored in dry place. Store the machine in a dry place.

## **INSTRUCTIONS FOR A PROPER USE OF THE MACHINE**

The following information highlights potentially dangerous conditions for the operator and/or machine. Read this manual carefully in order to become familiar with the machine. Learn to know when these conditions may occur. Set all the safety devices on the machine. Take all necessary measures in order to train the staff who will use the machine. Immediately report damages to the machine or incorrect operation.

1. Keep hands and clothing away from rotating parts.
2. Do not run the machine with the belt and abrasive guards open.
3. Always run the machine with the dust bag in place.
4. Do not remove the dust bag while the motor is running.
5. Always disconnect the power supply cable before starting maintenance operations.
6. The machine must always be carried with care, since each single part in which the machine can be dismantled is extremely heavy
7. Always use the machine in a well-ventilated area.
8. Always handle dust from sanding correctly (see page 8).

**MACHINE CHARACTERISTICS**

ABRASIVE DIMENSION FOR DRUM:	203 x 480 mm RING
ROLLER WIDTH	200 mm
ROLLER DIAMETER	150 mm
ROLLER SPEED	2700 RPM
MOTOR ( A43 ) EUROPEAN AND UK ( A45 ) USA	230V~ 50 Hz 1,5 kW 240V ~ 50 Hz 1,5 kW 115V~ 60 Hz 1,5 kW
HANDGRIPS	POSSIBILITY OF HEIGHT ADJUSTMENT: 2 POSITION
CONTROL LEVER	OPERATED FROM THE HANDGRIPS
LEVEL CONTROL	BY MEANS OF AN OFF-CENTRE PIN ON THE WHEEL
SAFETY MOTOR PROTECTION	BY MEANS OF LEVER <b>N. 9 FIG. A</b> RELEASING THE LEVER THE MOTOR STOPS
WHEELS	Ø 80 mm REPLACEABLE
BEARINGS	LIFELONG LUBRICATED RADIAL BEARING
ROLLER PRESSURE ADJUSTMENT	CONTINUOUSLY ADJUSTABLE
NOISE OF THE MACHINE WORKING IDLE (continuous and cautious level of acoustic pressure A measured at the distance of 0,4 m from handgrips and from 1,5 m from ground level)	80 dB(A)
MACHINE DIMENSIONS	320 x 810 x 1070 mm
NET WEIGHT	45 kg
PACKAGE DIMENSION	2 boxes 660 x 370 x 640 mm e 340 x 220 x 880 mm
GROSS WEIGHT	56 kg
DOTAZIONE STANDARD	DUST BAG, USE KEYS, USE AND MAINTENANCE MANUAL

## INDICATIONS CONCERNING THE MACHINE

### NON-ALLOWED USAGE

- WARNING:** Injuries or damages may occur if the machine is used to move other objects or if it is moved on a slope. The machine must be used exclusively for sanding dry wooden floors which are flat or have a maximum slope of 2%. Do not use the machine to sand steps or pieces of furniture. Do not ride the moving machine.
- WARNING:** Serious damages may be caused to the surface being worked if the machine is left running on the spot while the roller is in contact with the surface. In order to avoid damaging the surface, always approach the cutting line delicately. Do not stop while the roller lowers or rises, but always move at a constant speed.

### HOW TO START UP THE MACHINE

In order to start up the machine, proceed as follows:

1. Familiarise yourself with the machine and read all the danger, warning and caution instructions. Make sure that all operators have read this manual.
2. Place the dust bag on the elbow and tie the cord on the bag fastener.
3. Find the power socket. The socket must be compatible with the plug. To avoid danger, the socket must be earthed and protected by a fuse (20 Amp).
4. Keep the cable out of the machine's way.
5. Turn the belt guard upwards **fig. B pos. 2**.
6. Fix the abrasive following the “**PROCEDURES FOR THE SETTING OF THE ABRASIVE**” on page 17 according to the kind of drum assembled on the machine.
7. Make sure that lever **pos. 1 fig A** is hooked up and the roller is off the floor.
8. Close the abrasive guard **pos. 2 fig. B**
9. Put the plug into the socket.
10. Release the safety lever **pos. 8 fig. A** and push the start-up lever **pos. 9 fig. A** until you seize the handgrip below ( the motor starts up ). Keep the start-up handle pushed, release the knob **pos. 10 fig. A** and push forward the drum control lever **pos. 1 fig. A**. Sand.
11. In order to stop the machine hook the drum control lever and release the start-up handle, which automatically returns to initial position.

**EC DECLARATION OF CONFORMITY**  
**73/23CEE, 89/392/CEE, 91/368/CEE**  
**89/336/CEE, 92/31/CEE, 93/44/CEE**  
**93/68/CEE**

We

**Janser GmbH**  
**Maschinen- und Gerätebau**  
Böblinger Straße 91  
71139 Ehningen  
GERMANY

declare under our responsibility that the product

**Jaguar**  
**DRUM SANDER**

to which this declaration relates is in conformity with the following standards or other normative document(s):

- Safety of machinery - Basic concepts, general principles for design  
.....Basic terminology, methodology EN 292 Part 1 -September 1991
- Safety of machinery - Basic concepts, general principles for design  
Technical principles and specification EN 292 Part 2 September 1991
- Safety of machinery - Electrical equipment of machines  
Part 1 : General requirements EN 60204-1 - October 1992
- Safety of household and electrical appliances - General requirements  
EN 60335-1 - June 1988 + Modification 2, 5, 6, A51, A52, A53, A54, A55
- Limits and methods of measurements of radio disturbance characteristics of electrical motor-operated and thermal appliances for households and similar purposes, electric tools and similar electric apparatus - EN 55014 - Edit. 1987 + modification A2 (1990)
- General emission standard - Residential, commercial and light industry EN 50082-1 Edit. 1992

following the provisions of the Directives:

**73/23CEE, 89/392/CEE, 89/336/CEE, 91/368/CEE 92/31/CEE, 93/44/CEE 93/68/CEE**

## PROCEDURES FOR SETTING UP THE MACHINE

### ADJUSTMENT OF SANDING PRESSURE

In order to change the pressure of the roller on the floor, adjust hand wheel **pos. 3 fig. B** as follows:

1. By turning the hand wheel clockwise, the roller pressure on the floor increases.
2. By turning the hand wheel anti-clockwise, the roller pressure on the floor decreases

### WHEEL ADJUSTMENT

(on a plane parallel to the roller axis)

In order to adjust the position of the wheels, proceed as follows:

1. Unscrew the nut **pos. 4 fig. B**.
2. Turning the screw **pos. 5 fig. B** clockwise the extremity of the side guard drum lifts off the floor.
3. Turning the screw **pos. 5 fig. B** anti-clockwise the extremity of the side guard drum lowers towards the floor.
4. Once the position of the drum is correct block the jam nut **pos. 4 fig. B**.

### ADJUSTMENT OF HANDLE'S HIGHT

1. Make sure that the power supply cable is not connected to the power line and to the machine.
2. Move the lever **pos. 1 fig. A** forward lift up the tube **pos. 3** and release the rod **pos. 4** from the cylinder **pos. 2**.
3. Lose the screw **pos. 11** until the complete handgrip becomes mobile.
4. Lift up or lower the complete handgrip until you reach the upper or lower block.
5. Tighten the screw **pos. 11**, insert the rod **pos. 4** into the cylinder **pos. 2** and lower the tube **pos. 3 fig. A**. Lift the drum up by the lever **pos. 1 fig. A**.

**WALL EDGE WHEEL**

In order to avoid damaging the skirting or wall while sanding along the wall, a small support with idle wheel **pos. 6 fig. B** has been fitted.

**WARNING:** The wall edge wheel is correctly positioned when the machine is about 8 mm from the wall with the wheel in contact with it.

Before starting work, position the wheel **pos. 7 fig. B** correctly by unscrewing the locking support screw, moving the support to the required position and tightening the screw.

**PROCEDURES FOR THE SETTING OF THE ABRASIVE****JAGUAR EXPANSION** (*centrifugal drum*)

Wrap the abrasive **pos. 2 Fig. C** around the drum **pos. 1**, making sure that the abrasive sticks out about 1.5 mm from the drum itself.

**WARNING:** The abrasive is in the correct position when it sticks out about 1.5 mm from the sanding drum

**DANGER:** A damaged abrasive can, should it tear off while sanding, cause damages to the machine and the floor.



## PERIODICAL ROUTINE MAINTENANCE

In order to keep the machine in good working condition, it is necessary to check and maintain the following items periodically.

### **SANDING CHAMBER** *(for users)*

Periodically vacuum-clean the sanding chamber of dust

### **ROLLER** *(for users)*

Periodically check the external surface of the sanding roller. Remove any possible dirt.

### **WHEELS** *(for users)*

Periodically remove dirt from the machine body and wheels. Dirt can cause ripples on the sanded surface.

### **DUST BAG** *(for users)*

Remove the bag and shake it vigorously to empty out the sanding dust. Turn the bag inside out and wash it in a washing machine in cold water in order to prevent the pores from blocking and its ability to collect dust from decreasing.

### **BELT TENSION** *(for users)*

Check, every 500 hours' work, the belt tension removing the belt guard **pos. 8 fig. B**, after the removal of the screws (2 of them) and the loosening of the screws for motor blocking (4 of them) **pos. 1 fig. H**.

Adjustment of suction belt tension has to be done by means of the screw tighten **pos. 2 fig. H**.

As soon as the adjustment is done, block again screw **pos. 1 fig. H** and replace belt guard.

In case the belt is too much worn out it has to be replaced.

**CAUTION:** Excessive belt tension may cause the ball bearings to wear out prematurely.  
The roller belt must deflect by 10,5 mm when a load of 30 ±3 N. is placed in the middle.

### **BALL BEARINGS** *(for service dept. ONLY)*

Check the ball bearings periodically for wearing out or damages according to the following schedule:

Wheels	after the first 2500 hours
Impeller shaft	after the first 2500 hours
Sanding roller	after the first 5000 hours
Motor shaft	after the first 5000 hours

## SPARE PARTS

Always use original JANSER spare parts. The guarantee and consequent responsibility are forfeited if non-original JANSER spare parts are used, and if repairs and adjustments are carried out by unauthorized personnel.

## EMERGENCY SITUATIONS ( for uses )

PROBLEMS	CAUSES	REMEDIES
Insufficient cut	worn out or unsuitable abrasive insufficient roller pressure insufficient roller belt tension worn out roller belt	replace abrasive increase roller pressure, see pg. 15 increase belt tension, see pg. 17 replace belt
Insufficient motor speed	insufficient voltage due to: excessive length or unsuitable cable cross-section precarious connections faulty capacitor faulty motor	use cable of suitable length and cross-section set up suitable connections contact an authorized JANSER distributor contact an authorized JANSER distributor
Grooved work surface	faulty abrasive dirty or faulty roller surfaces incorrect wheel adjustment	replace abrasive clean, straighten or replace the rubber-coated drum correct wheel position, see pg. 16
Insufficient dust collection	dust bag over one-third full dust bag dirty or with closed pores intake and or outlet ducts blocked	empty out the contents of the bag shake out the bag and wash it clean the air ducts
The motor does not start	faulty contactor faulty capacitor insufficient voltage due to precarious connections faulty motor no mains supply voltage	contact an authorized JANSER distributor contact an authorized JANSER distributor contact an authorized JANSER distributor check power supply and connections
Burns on the work surface	worn out abrasive excessive roller pressure excessively fine abrasive	replace abrasive decrease sanding pressure, see pg. 15 use a coarser abrasive